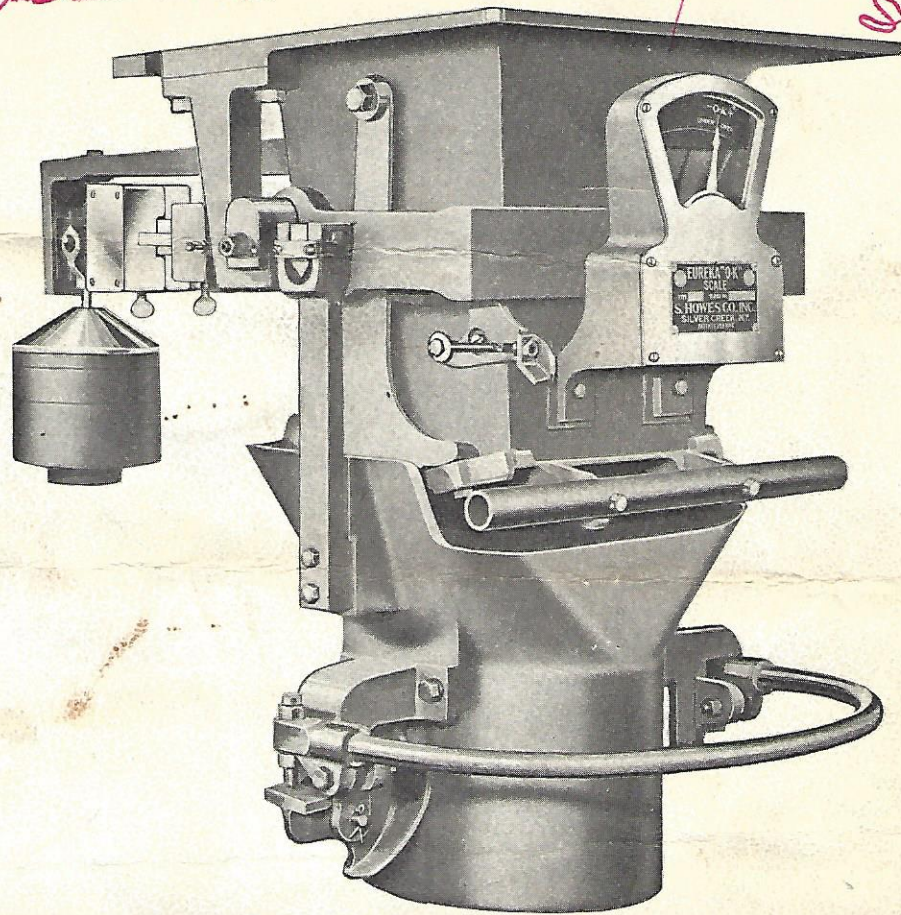


File - Mill Remodeling - Instruction Sheet



EUREKA

O. K. bagging scales

fill and weigh up to 360 bags per hour

S. HOWES CO., INC.



Bulletin No. 700

compact...
portable...
fast...
accurate...

Combining filling and weighing into one fast semi-automatic operation, Eureka O.K. Bagging Scales handle as many as six 100 lb. bags per minute... 360 per hour... at minimum cost.

The two models are basically the same except for the bag bell and bag holding devices:

Model A Bag Bells — 3 Sizes

12" diameter for 100 lb. bags
 10" diameter for 50 lb. bags
 8" diameter for 25 lb. bags

Model B Bag Bells — 2 Sizes

Small size for 25 and 50 lb. bags
 Large size for 100 lb. bags

The over-and-under dial is at an easy to read eye level. The indicator moves smoothly and evenly as bag is filled; held steady by an oil-controlled dash pot. Waiting for a swinging wavering pointer is eliminated. Extra large pivots are hardened and honed for long-life, extreme accuracy and heavy service.

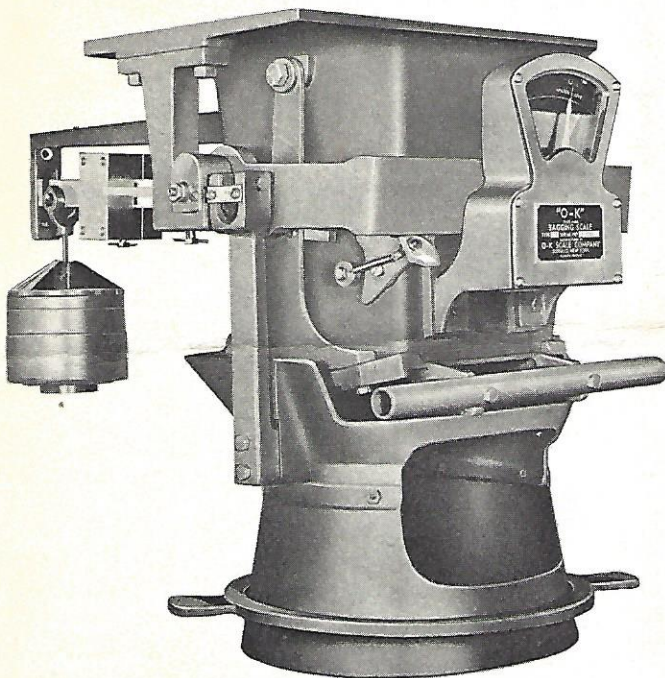
Construction is rugged, compact and comparatively light weight (17 $\frac{3}{8}$ " wide x 32" deep x 21 $\frac{1}{4}$ " high x approx. 200 lbs.). Exposed parts are cadmium or nickel plated.

Portability is provided by optional support frame on casters. This permits servicing several hoppers with one O.K. Bagging Scale.

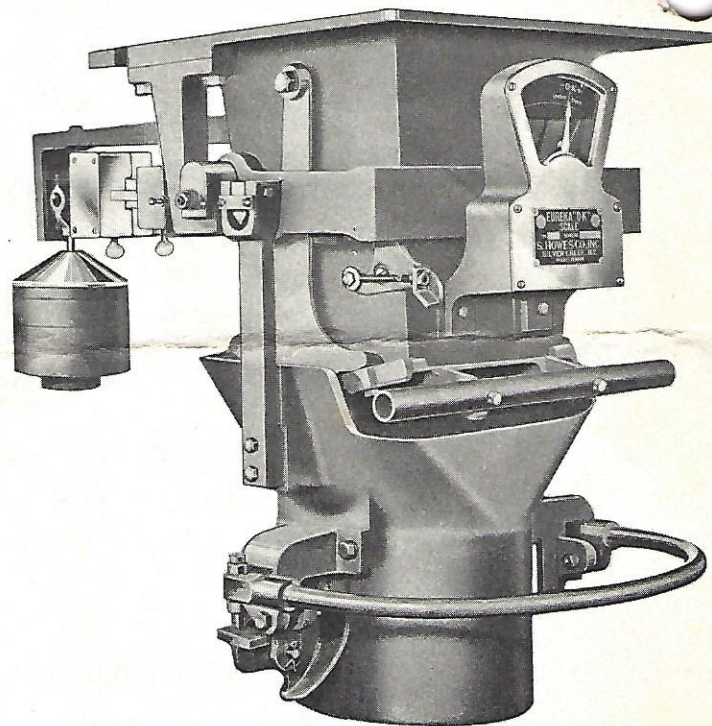
*When scale is to be used for molasses feed — state so when ordering. This application requires straight welded throat to prevent plugging.

weighs 25 to 200 lbs. 2 models

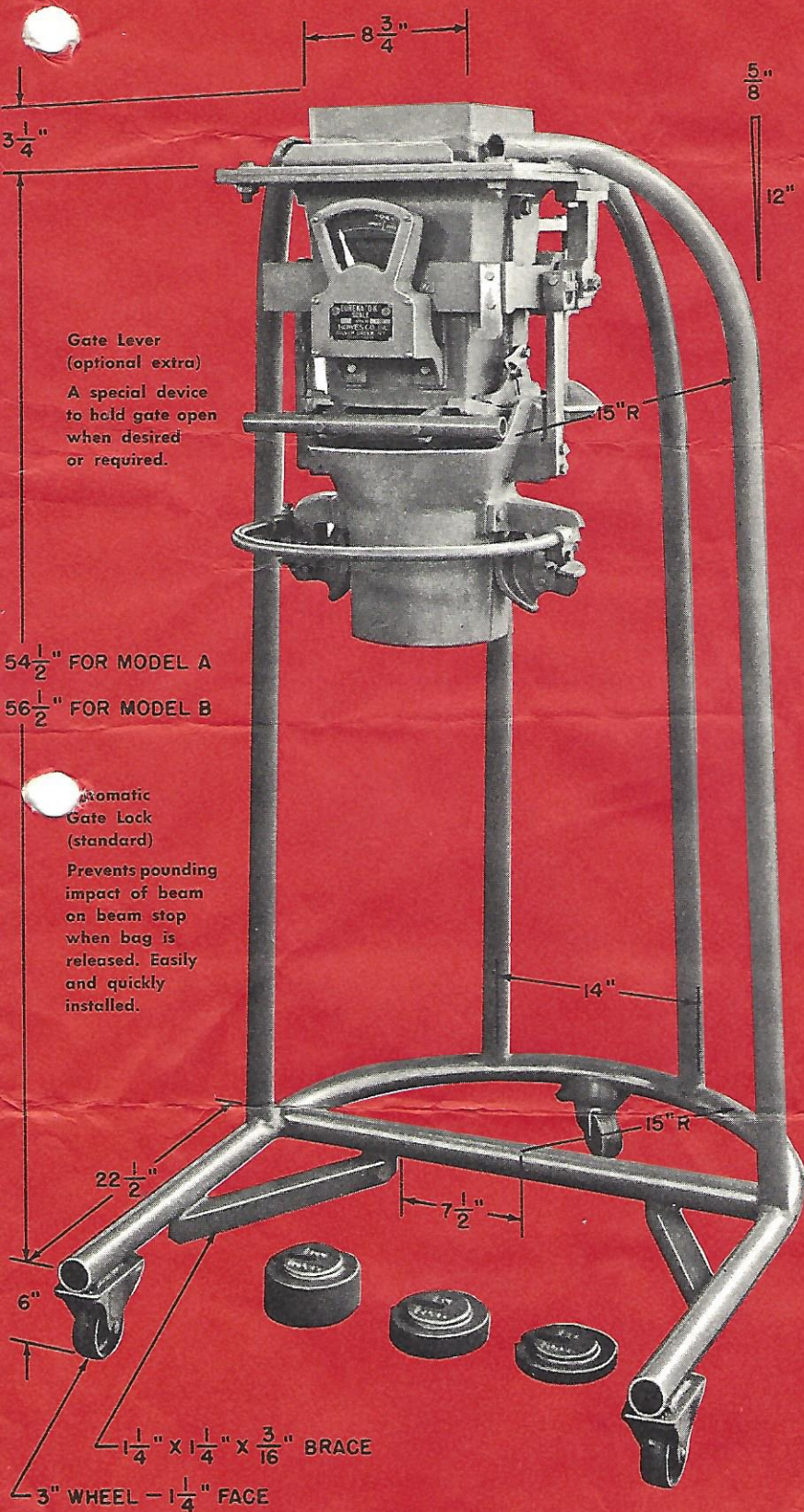
***Will Handle Molasses Feed**



MODEL A — EUREKA O. K. BAGGING SCALE
 Specially designed with sheet metal bag bell and rubberized "Ring" to grip cotton and burlap bags.



MODEL B — EUREKA O. K. BAGGING SCALE
 Features versatile "Bag Clamp" to hold jute, paper or multi-walled bags.

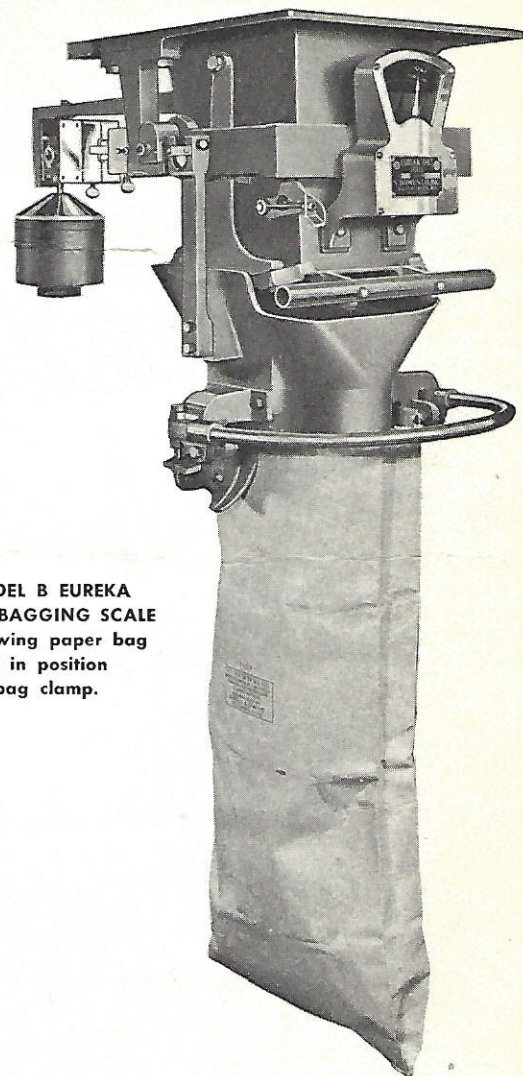


Gate Lever
(optional extra)
A special device
to hold gate open
when desired
or required.

54 $\frac{1}{2}$ " FOR MODEL A
56 $\frac{1}{2}$ " FOR MODEL B

Automatic
Gate Lock
(standard)
Prevents pounding
impact of beam
on beam stop
when bag is
released. Easily
and quickly
installed.

Scale Support Frame. (Optional extra)
Portable support frame on casters provides
servicing of several hoppers with one O. K. Bagging Scale.



MODEL B EUREKA
OK BAGGING SCALE
Showing paper bag
held in position
by bag clamp.

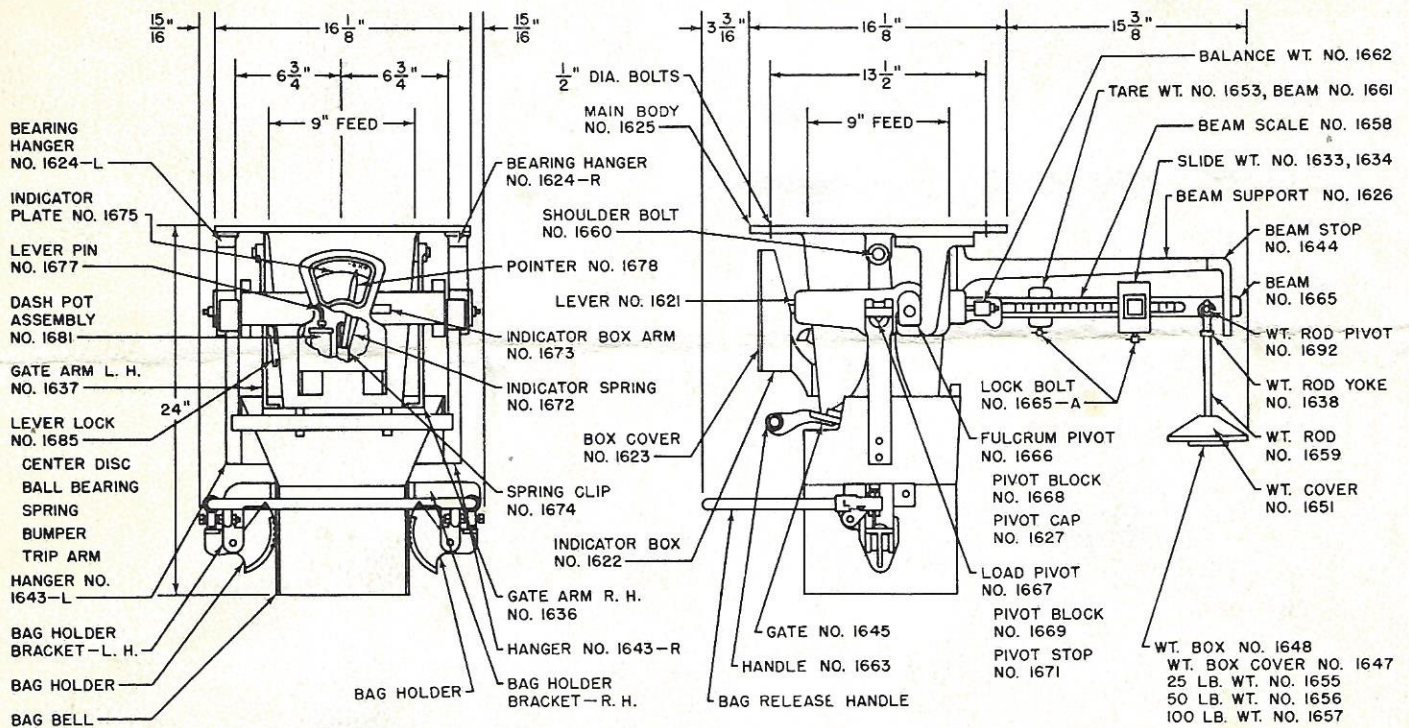
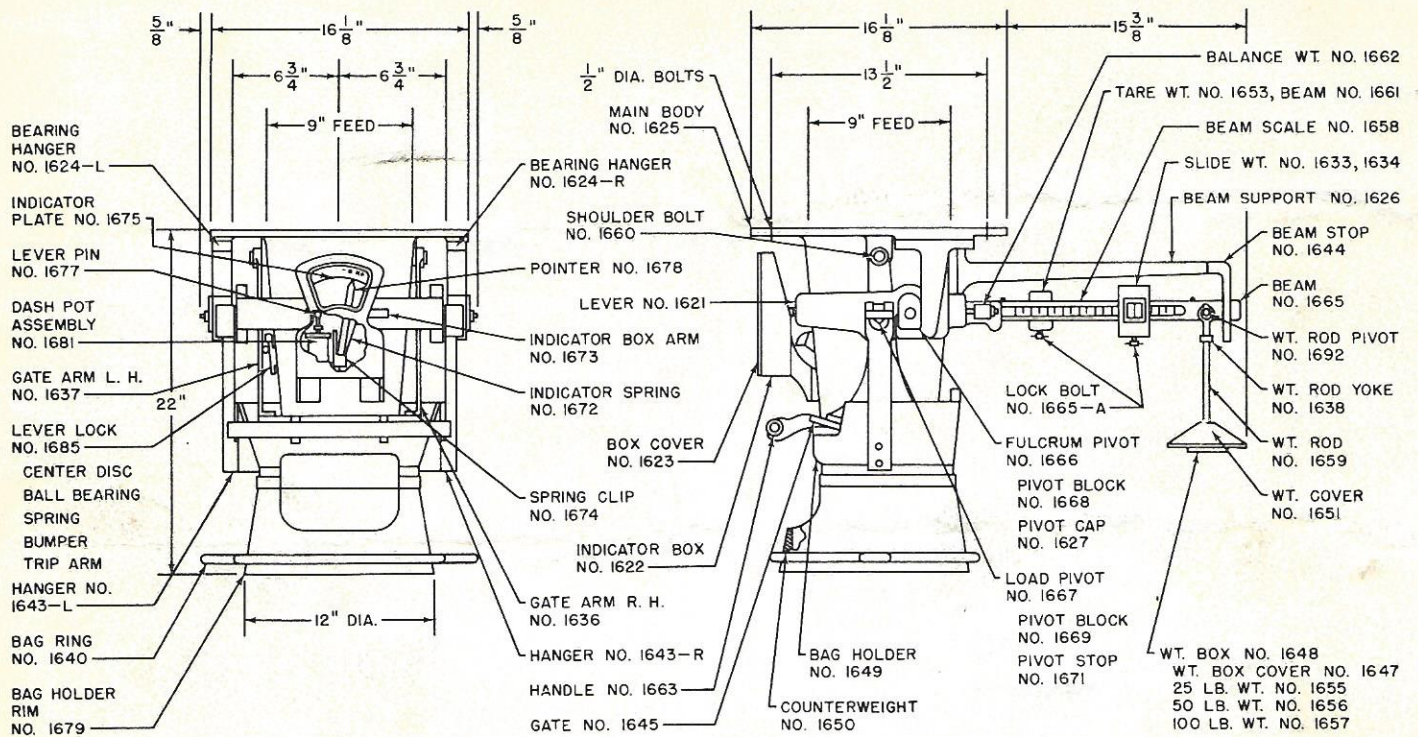
EASILY OPERATED Weighs as it Fills

With the bag held securely in position, an outward pull on the crossbar opens the feed gate. Feed flows through the scale into the bag. Filling and weighing are simultaneous. When the dial indicator shows the predetermined weight, the bar is released closing the gate.

Cam-Operated Lever (an optional extra) will hold the gate open until bag is filled thus enabling operator to sew or further handle the preceding bag.

FOR FILLING OR WEIGHING any materials in Burlap, Cloth or Paper Sacks

Flour	Mica	Dry Chemicals
Feed	Starch	Soy Bean Meal
Grain	Coffee	Flaxseed Meal
Minerals	Fertilizer	Asbestos
Shells	Fish Meal	Powdered Coal
Peanuts	Bone Meal	Cottonseed
Rice	Shelled Corn	Cracked Cake
Beans	Field Corn	Cottonseed
Sugar	Dried Fruits	Pellets and Meal
Salt	Nitrate of Soda	Dog Food



NOTE: Give Serial No. of Scale when ordering parts.



S. HOWES CO., INC.

Manufacturing Engineers

SILVER CREEK, N. Y. 14136

(Area Code 716) 934-2611