

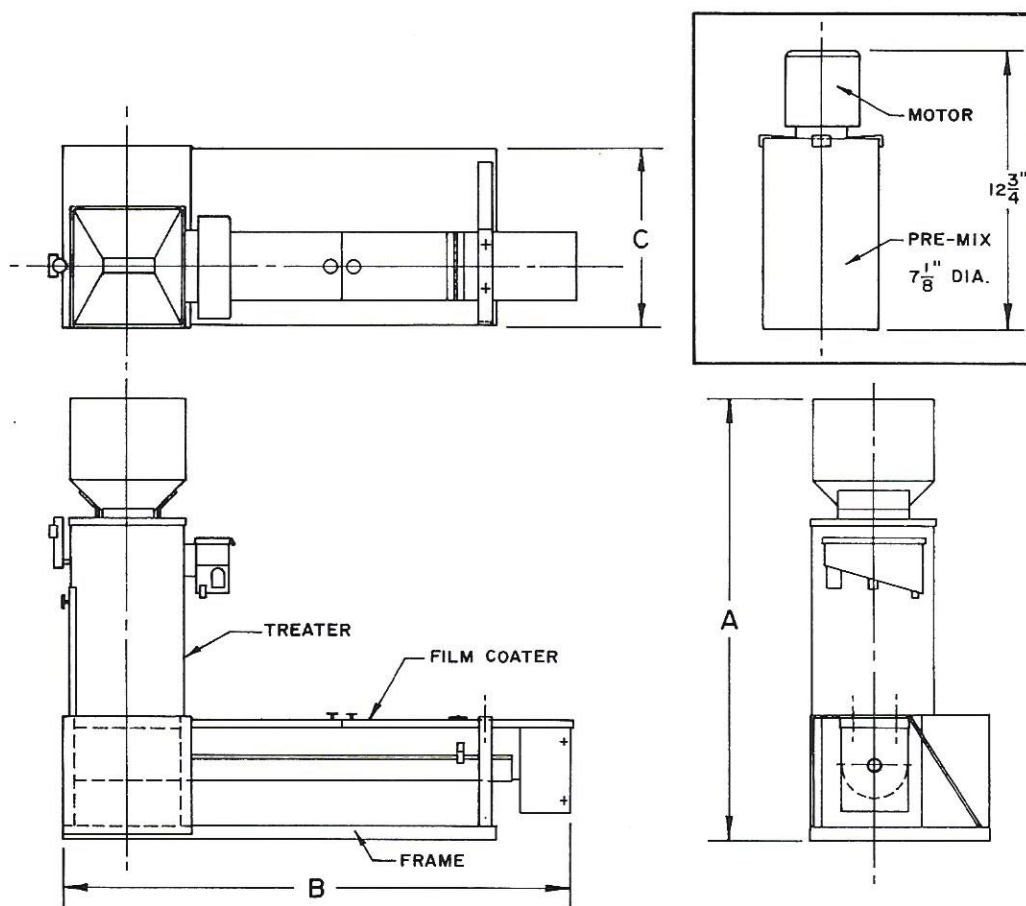
MIST-O-MATIC MODEL SS-LA

Not everyone who treats seeds needs a full-size Mist-O-Matic treater.

That's why Gustafson has designed a half-size version. It's called the Model SS-LA and is ideally suited for small batch treating, vegetable seed treating, laboratory experiments and pilot project situations where the Mist-O-Matic process must be duplicated exactly, but only on a smaller scale. The Model SS-LA comes equipped with the following.

- Treater and coating chamber are made of durable, non-corrosive stainless steel.
- Small and compact, the SS-LA has a minimum of moving parts for trouble free operation.
- Variable speed drive gives you a choice of four blending speeds.
- Standard mixing element is stainless steel flighting-rod assembly for duplicating actual field results and blending brush element for small and easily damaged seeds. When ordering, please specify which element is to be installed.
- Hinged trough drops away for easy and complete clean-out when changing seed type or mixing elements.
- One gallon stainless steel premix tank is standard.

Gustafson 



TECHNICAL DATA

SPECIFICATIONS/DIMENSIONS

Capacity*	1-lb. per lot 2500 lbs. per hr.
Treater Motor	1/20 hp.
Blender Motor	1/4 hp.
Premix Tank Motor	1/20 hp.
Premix Tank Capacity	1-gallon
Treater Height (A)	44-1/4"
Treater Length (B)	39-1/4"
Treater Width (C)	16"
Treater Weight	81-1/2 lbs.
Premix Tank Weight	11-1/2 lbs.
Total Weight	93 lbs. uncrated

*Capacity will vary with the type of seed being treated and the amount of chemical applied to the seed.

OPTIONS

1. Additional metering tanks
2. Two-way bagger
3. Additional premix tanks and pumps

CAUTION: This treater is designed for laboratory lots only. DO NOT use for commercial or continuous operation.

Normal product development and improvement may cause variances from the above specifications and/or dimensions. Gustafson, Inc., therefore, reserves the right to incorporate any changes without notice.

Gustafson, Inc.

6600 Washington Ave. So./Eden Prairie, MN 55344/(612) 941-1630
6350 LBJ Frwy., Suite 180/Dallas, TX 75240/(214) 661-1334